

橋橋川斐揖 ABUTMENTS & PIERS

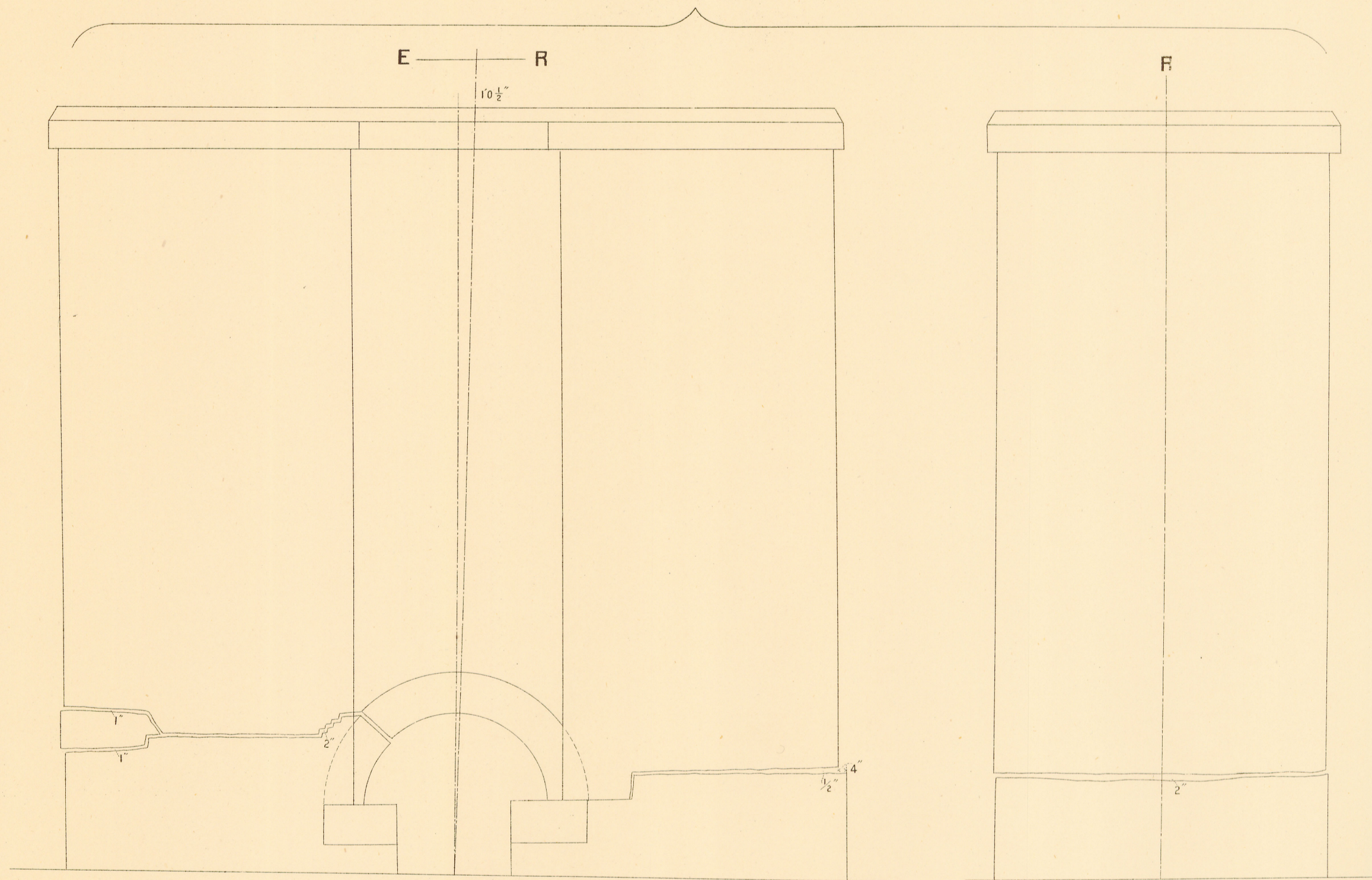
BRIDGE.

quake disaster of Oct. 28th, 1891.

an inch.

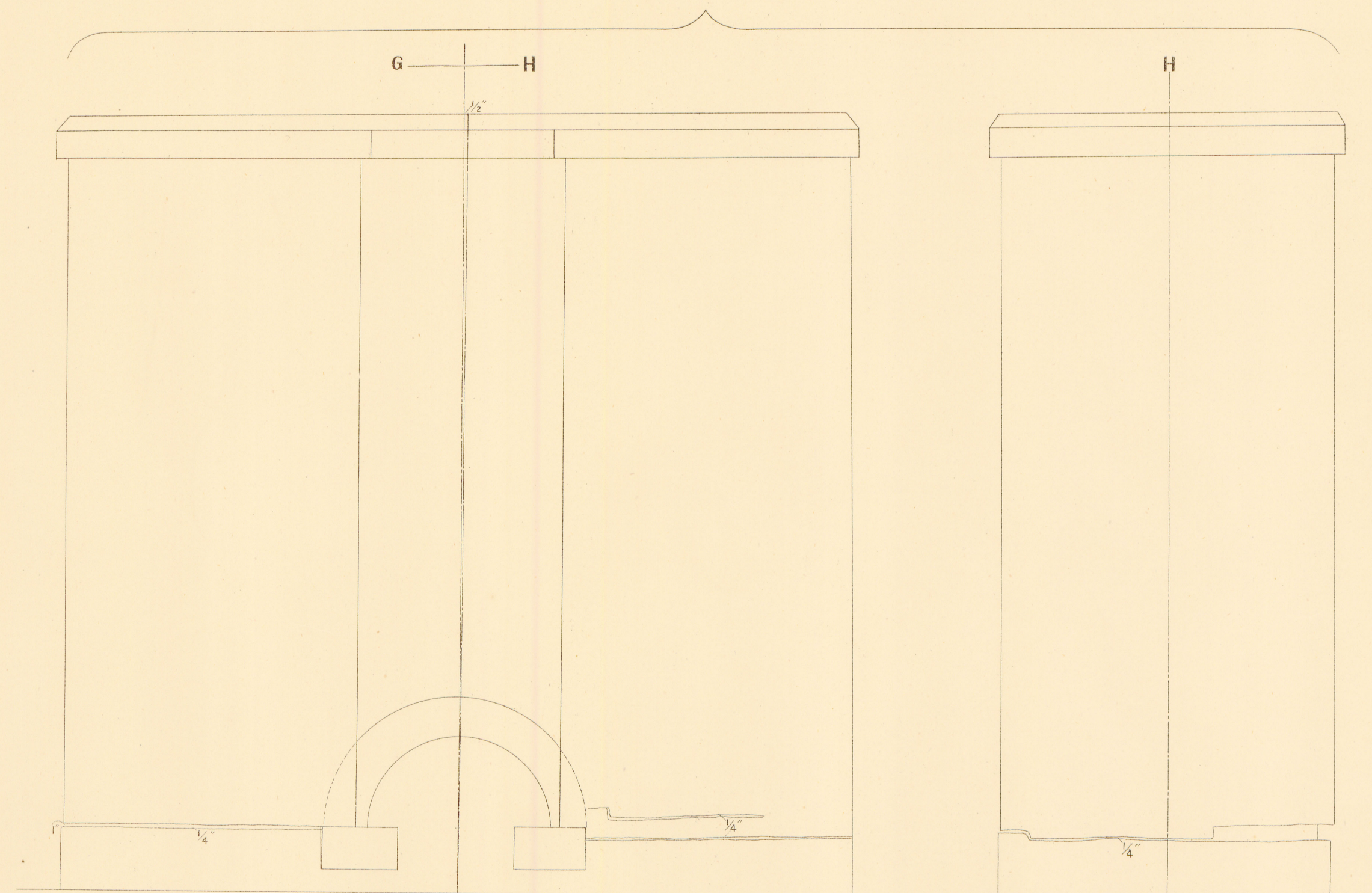
Pier No. 3.
脚橋三第

Pier No. 2.
脚橋二第



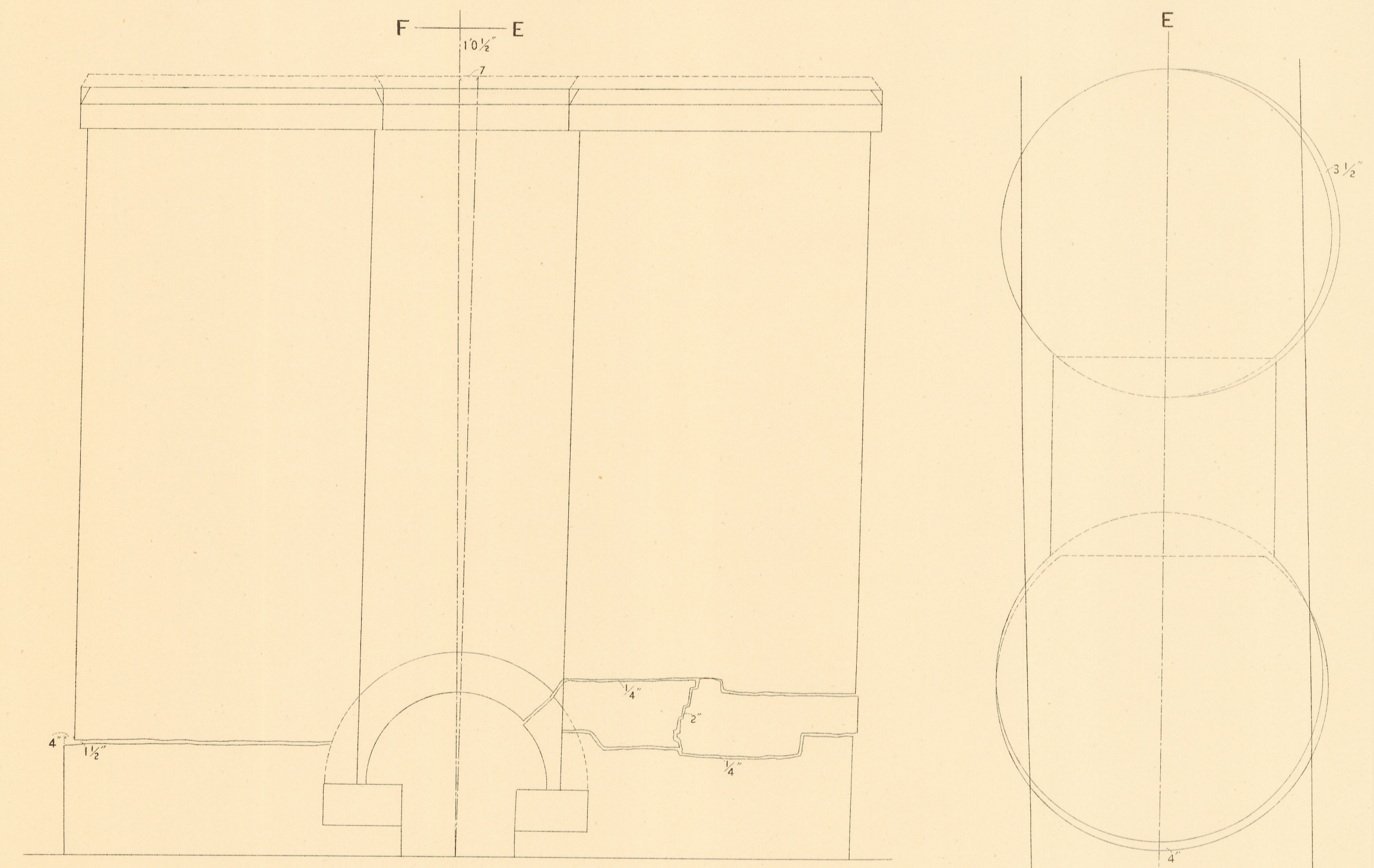
面側西
West Side View

面側南
Down Stream End View



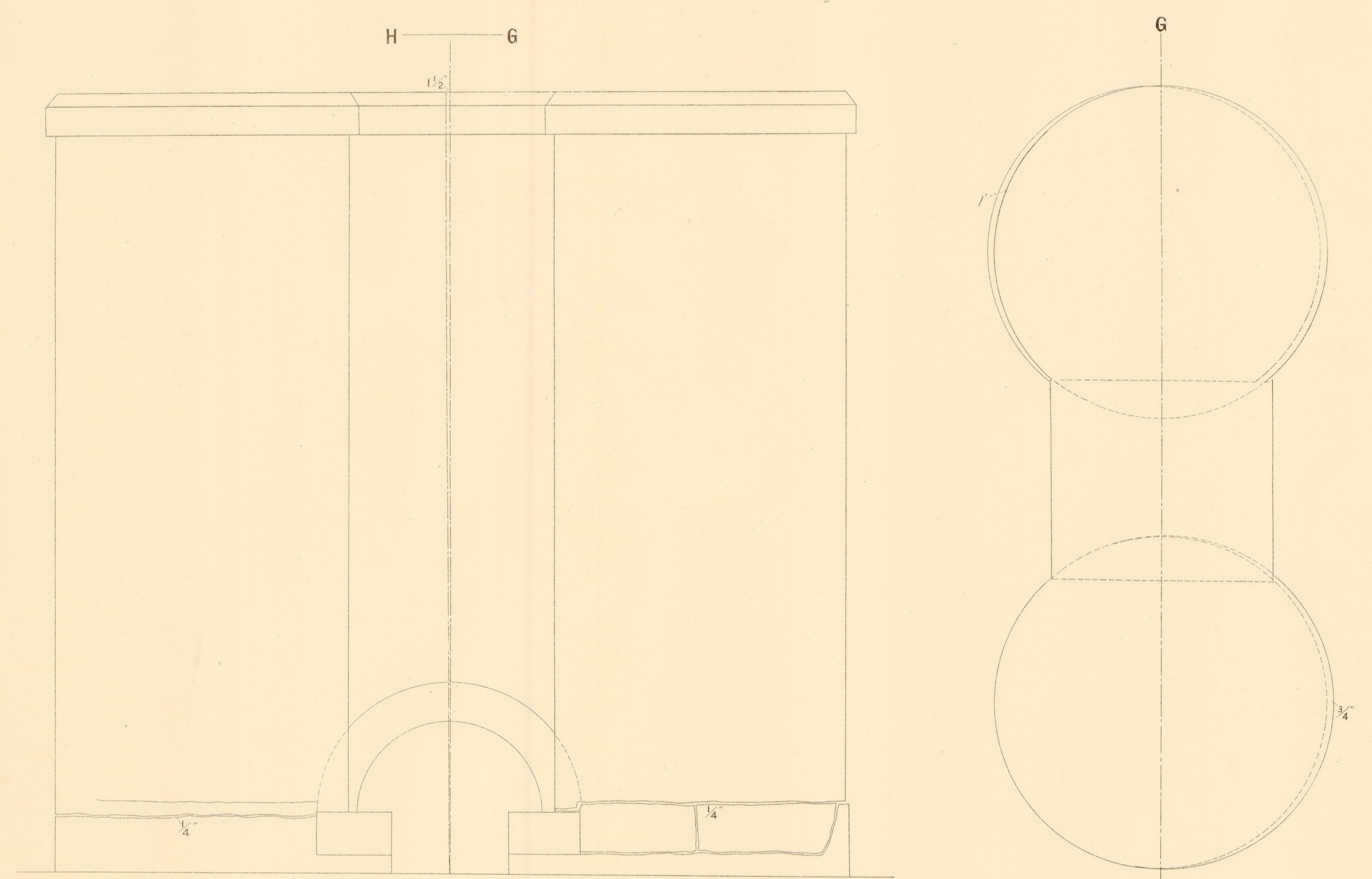
面側西
West Side View

面側南
Down Stream End View



面側東
East Side View

面F平
Plan



面側東
East Side View

面H平
Plan

