

# 圖脚橋造改及圖害震橋川新

## ELEVATION AND PLAN

OF

### SHINKAWA BRIDGE.

Showing the condition after the great earthquake of Oct. 28th, 1891.

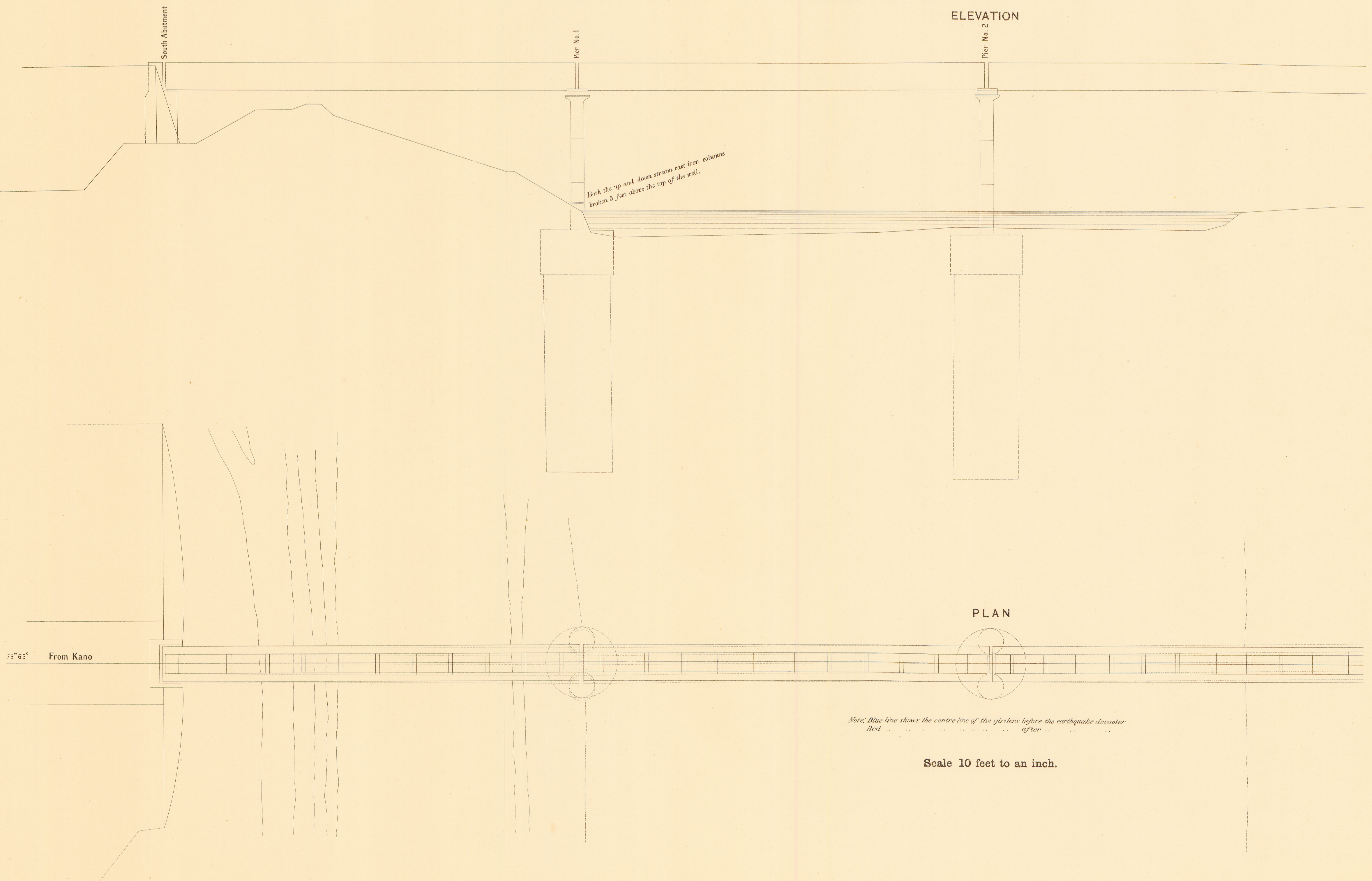
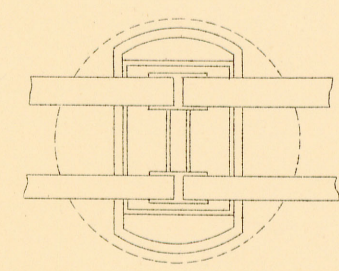
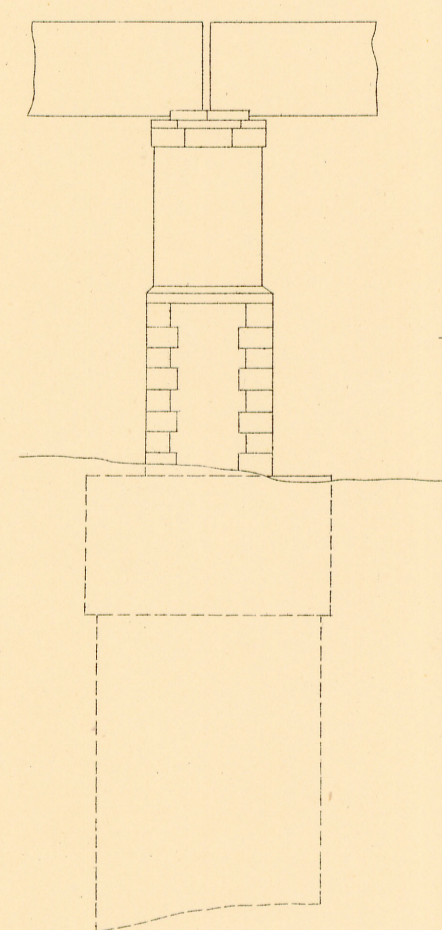
Two piers, each consisting of a pair of cast iron columns, 2'6" in diameter,  $\frac{1}{2}$ " thick, filled with concrete, broken at a few feet above top of foundation wells and the bridge twisted as shown.

#### ELEVATION AND PLAN

OF

#### PIER

as reconstructed after the earthquake.



ELEVATION

PLAN

Note. Blue line shows the centre line of the girders before the earthquake disaster.  
Red .. .. . after .. .. .

Scale 10 feet to an inch.

