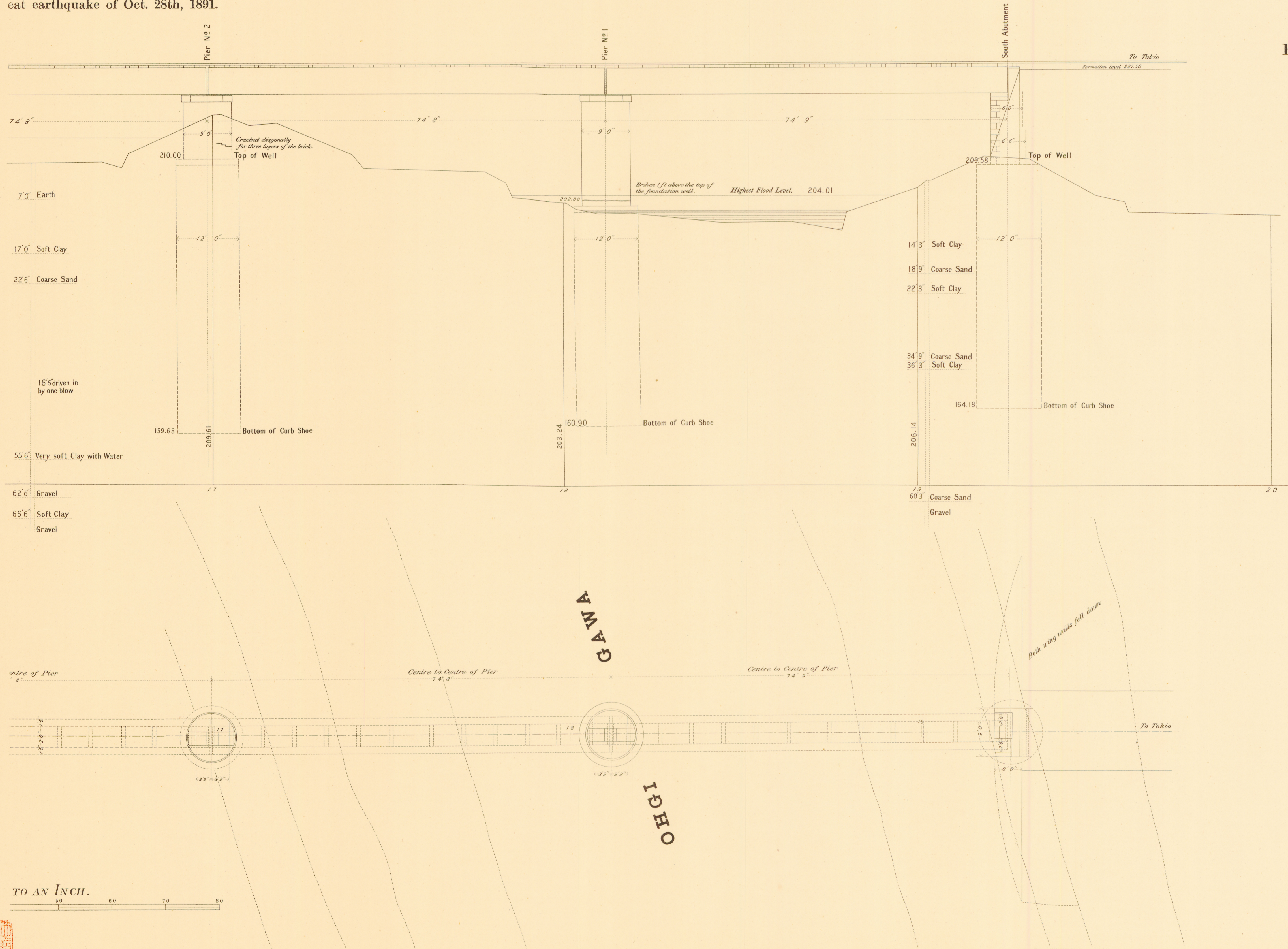


川白天 AND PLAN

F WA BRIDGE.

eat earthquake of Oct. 28th, 1891.



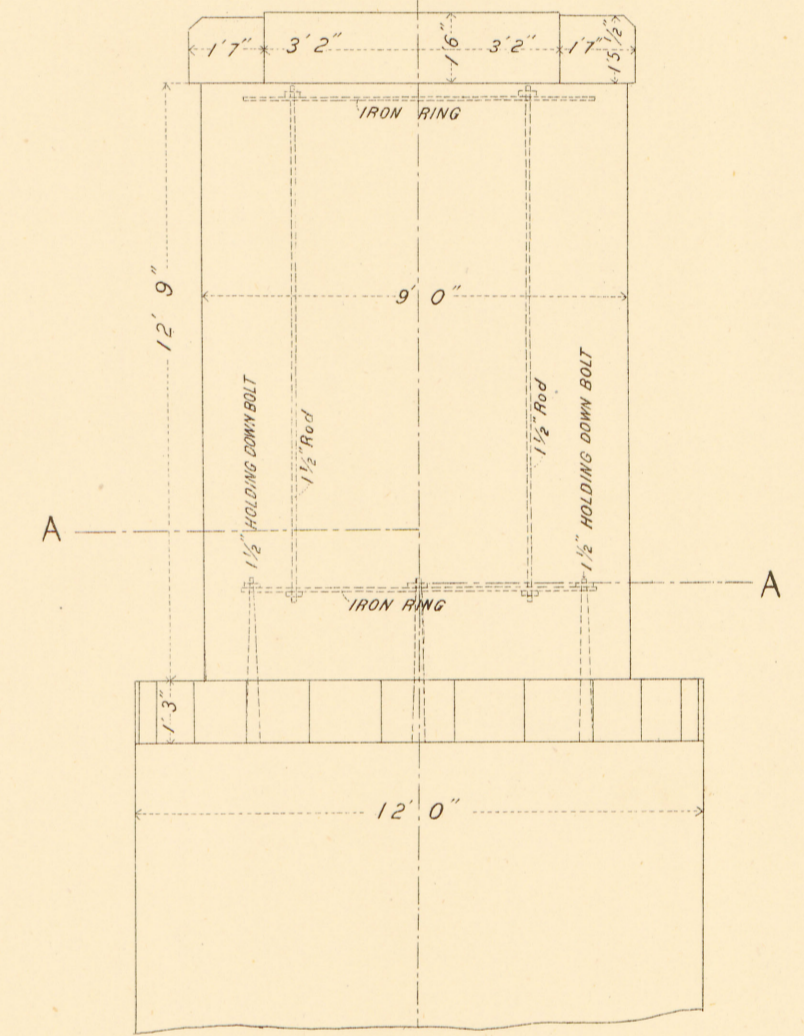
ELEVATION AND SECTIONAL PLAN

OF

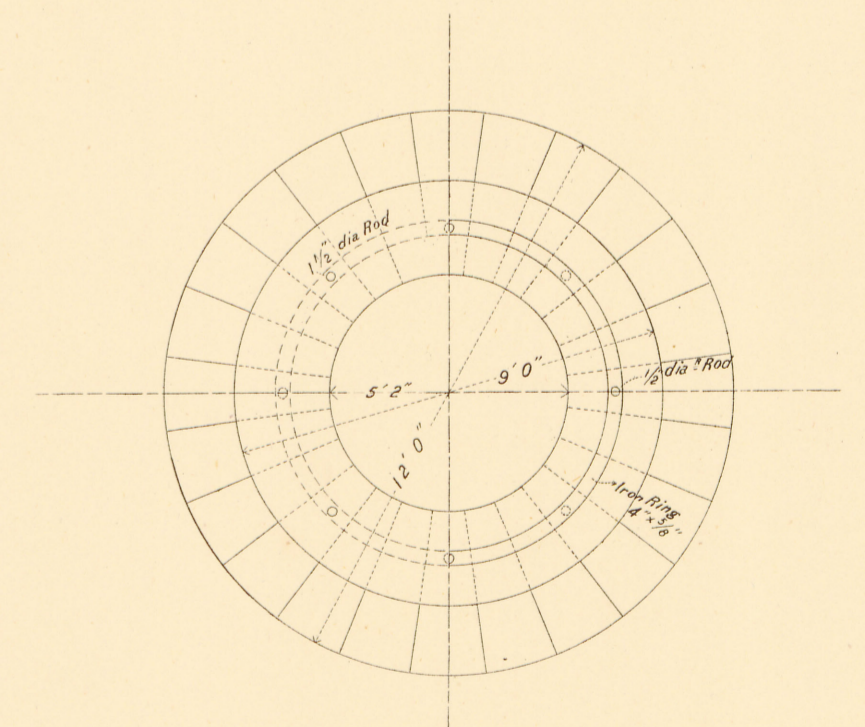
PIER No. 3

as reconstructed after earthquake damage of Oct. 28th, 1891.

Elevation



Sectional Plan at AA



TO AN INCH.
0 10 20 30 40 50 60 70 80

Scale 4 ft. = 1 inch.

