

Lg attenuation in northeast China using NECESSArray data

Nishath R. Ranasinghe,¹ Andrea C. Gallegos,¹ Andrea R. Trujillo,^{1,2}
Alexander R. Blanchette,¹ Eric A. Sandvol,³ James Ni,¹ Thomas M. Hearn,¹
Youcai Tang,^{4,5} Stephen P. Grand,⁴ Fenglin Niu,^{5,6} Yongshun J. Chen,⁷ Jieyuan Ning,⁷
Hitoshi Kawakatsu,⁸ Satoru Tanaka⁹ and Masayuki Obayashi⁹

¹*Department of Physics, New Mexico State University, Las Cruces, NM 88001, USA. E-mail: nrana001@nmsu.edu*

²*Apache Corporation, 303, Veterans Airpark Lane, #600, Midland, TX 79705, USA*

³*Department of Geological Sciences, University of Missouri, 101 Geology Bldg., Columbia, MO 65211, USA*

⁴*Jackson School of Geosciences, The University of Texas at Austin, Austin, TX 78712, USA*

⁵*State Key Laboratory of Petroleum Resource and Prospecting and Unconventional Natural Gas Institute, China University of Petroleum, Beijing 102249, China*

⁶*Department of Earth Science, MS-126, Rice University, Houston, TX 77005, USA*

⁷*Institute of Theoretical and Applied Geophysics, SESS, Peking University, Beijing, China*

⁸*Earthquake Research Institute, The University of Tokyo, Tokyo, Japan*

⁹*Institute for Frontier Research on Earth and Evolution, Japan Agency for Marine–Earth Science and Technology, Yokosuka, Japan*

Accepted 2014 September 24. Received 2014 September 23; in original form 2013 November 5

SUMMARY

The 127 station NorthEast China Extended Seismic Array (NECESSArray) provides large quantities of high quality seismic data in northeast China that allow us to resolve lateral variations of Lg Q or crustal attenuation at 1 Hz (Q_0) to 2.0° or greater. Using the reverse two-station/event method with 11 642 Lg path-amplitudes from 78 crustal earthquakes, we obtain a 2-D tomographic image of Lg Q_0 with values ranging from ~ 50 to 1400. A high degree of detail in the lateral variation of Lg attenuation is revealed in our tomographic image. High Q_0 regions are found in the Great Xing'an, Lesser Xing'an and Songen-Zhanguangcai Ranges. Low Q_0 regions are observed in the Songliao, Sanjiang and Erlian Basins. The lowest Q_0 is found near the Wudalianchi volcanic field and other Quaternary volcanic fields, the southern Songliao Basin, the western edge of the Erlian Basin and the Sanjiang Basin. Low Q_0 values are measured for paths that cross sedimentary basins with thick, unconsolidated sediments. Most of the high Lg attenuation in the Songliao Basin correlates reasonably well with low crustal Rayleigh wave phase velocity anomalies. The highest attenuating regions also correlate well with regions of Holocene volcanism.

Key words: Tomography; Heat flow; Earthquake ground motions; Seismicity and tectonics; Guided waves; Seismic attenuation; Seismic tomography.

1 INTRODUCTION

The Lg wave is the most prominent high frequency ($f > 0.5$ Hz) regional phase observed at regional distances. It has a group velocity of about 3.5 km s^{-1} in northeast China and can be modelled as the sum of higher mode surface waves (Oliver *et al.* 1955; Knopoff *et al.* 1973; Herrmann & Kijko 1983) or as many supercritically reflected crustal S waves (e.g. Bouchon 1982). This wave only propagates efficiently over continental paths and can be seen at distances up to 30° in the Canadian Shield (Hasegawa 1985). The study of Lg wave attenuation has often been used for characterizing crustal structure since the sensitivity of the Lg wave to crustal properties makes it an important tool in better understanding the underlying causes of seismic anomalies in the crust (Ruzaikin *et al.* 1977; Ni & Barazangi 1983; Xie & Mitchell 1990; McNamara *et al.* 1996; Xie 2002; Zor

et al. 2007; Phillips & Stead 2008; Zhao *et al.* 2010; Bao *et al.* 2012). Lg attenuation is also an important factor in determining seismic hazard since the large amplitude of the Lg wave is capable of causing structural damage at regional distances (Campillo *et al.* 1989).

Early efforts to map crustal attenuation relied on the temporal decay rate of the Lg coda (e.g. Singh & Herrmann 1983). In these studies source effects were model dependent and site effects, which are due to the near surface effect of sediments and the focusing and defocusing of the seismic waves, were omitted. Furthermore, efforts at understanding Lg attenuation have been restricted to modelling it as if only geometric spreading and attenuation affect the amplitude, while in reality, the Lg wave train is much more complicated. We contend that spreading and attenuation are the two primary factors affecting Lg spectral amplitude at regional distances.

Indeed, synthetic modelling of Lg by Yang (2002) bears this out and we do not attempt more detailed modelling. Two approaches have lately been used to model the Lg amplitude. For example, Phillips & Stead (2008) directly inverted for the source, path and site effects using a 2-D inversion to produce an Lg attenuation map of the western United States. Bao *et al.* (2011) used an improved Reversed Two-station/event Method (RTM) originally developed by Chun *et al.* (1987) to map regional Lg attenuation in the eastern Tibetan Plateau. The RTM removes the source term and site effects by dividing out these terms (Bao *et al.* 2011). We have chosen to implement the RTM in NE China using data collected by the 127 station NECESSArray. A prior Lg attenuation study by Zhao *et al.* (2010) used 20 stations and thus was only able to resolve the attenuation of broad geographical features. With the use of extensive data our study has greatly improved the resolution and smaller geological features can now be discerned.

In what follows, we discuss the geology and tectonics of NE China and the data and method used to model Lg attenuation. We performed our study using the RTM, which allows us to model Lg attenuation within NE China. Finally, we address anomalies revealed in the Lg tomography image and their relationship with geology, physical parameters of the crust and how our study compares with other studies in NE China. Our results demonstrate Lg attenuation in NE China is mainly due to the combined effects of unconsolidated sediments and Quaternary tectonics.

2 GEOLOGY AND TECTONICS IN NORTHEAST CHINA

NE China is a geologically complex area characterized by widespread Phanerozoic granitic rocks, Upper Mesozoic and Cenozoic volcanic rocks and sedimentary basins (Fig. 1). Granitic rocks

cover at least 50 per cent of the area in mountainous regions with volcanic rocks forming most of the rest. The major basins are the Songliao, Hailar, Erlian and Sanjiang Basins. They are often deep and filled with rich, organic sediments. NE China is composed of fragments of small Archean blocks, Proterozoic blocks and intervening subduction complexes that were amalgamated before the Late Permian and then sutured onto the North China Block (NCB, also known as the Sino-Korean Craton) during the Late Triassic (~224 Ma). The accreted NE China block, also known as the Central Asian Orogenic Belt, subsequently collided with the Siberian plate upon the closure of the Mongol-Okhotsk Ocean in the Late Jurassic (e.g. Sengör *et al.* 1993; Windley *et al.* 2007; Zhou *et al.* 2012; Zhou & Wilde 2012).

Throughout much of the Mesozoic the tectonics of NE China were dominated by subduction of the Palaeo-Pacific oceanic plate from the east and the Mongol-Okhotsk oceanic plate from the north (e.g. Zhang *et al.* 2010; Li *et al.* 2012; Sun *et al.* 2012; Kiminami & Imaoka 2013). These subduction episodes produced subduction related volcanic rocks and granitoids over hundreds of millions of years that are widespread in the Great Xing'an Range. In the late Mesozoic the Palaeo-Pacific subduction and slab rollback underneath NE China controlled much of the volcanism. Mantle upwelling associated with slab rollback and backarc return flow initiated the Songliao Basin, a series of interconnected half-grabens, at about 157 Ma (e.g. Zhang *et al.* 2010; Trujillo 2013). In many ways the tectonics of NE China during the late Mesozoic is reminiscent of the tectonics of western North America during the Cenozoic (Trujillo 2013).

The Cenozoic tectonics of NE China were affected by the subduction of the Pacific Plate and the opening of the Sea of Japan. Intraplate alkaline volcanism occurred within the Songliao Basin in the early Cenozoic (Liu *et al.* 2001), while Oligocene and younger volcanism was distributed to the east and north of the Songliao

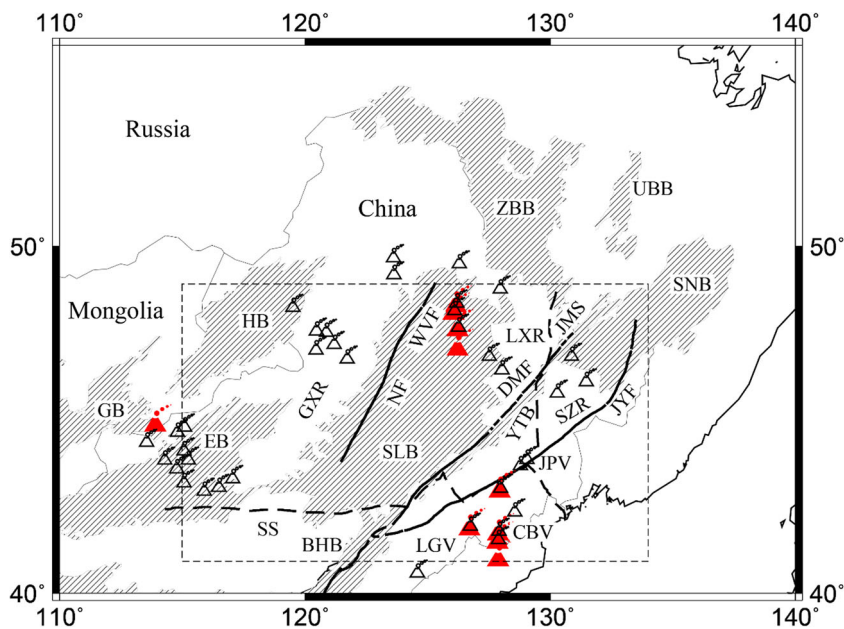


Figure 1. Tectonic map of NE China. Black lines are active faults and dotted black lines are Late Triassic sutures (after Zhou *et al.* 2012). Red triangles represent volcanoes of Holocene age and open triangles represent volcanoes of Pleistocene age. The hatched (diagonal lines) regions are sedimentary basins formed during Late Jurassic to Cretaceous times. Abbreviations on the maps are: GXR (Great Xing'an Range), LXR (Lesser Xing'an Range), SZR (Songen-Zhangguangcai Range), EB (Erlian Basin), GB (Gobi Basin), HB (Hailar Basin), SLB (Songliao Basin), ZBB (Zeya-Bureya Basin), UBB (Upper Bureya Basin), SNB (Sanjiang Basin), YTB (Yitong Basin), BHB (Bohai Basin), JMS (Jiayin-Mudanjiang Suture), SS (Suolon Suture), NF (Nenjiang Fault), DMF (Dunhua-Mishan Fault), JYF (Jiamusi-Yitong Fault), WVF (Wudalianchi Volcanic Field), JPV (Jingpuhi Volcanic Field), CBV (Changbaishan Volcanic Field) and LGV (Longgan Group of Volcanoes).

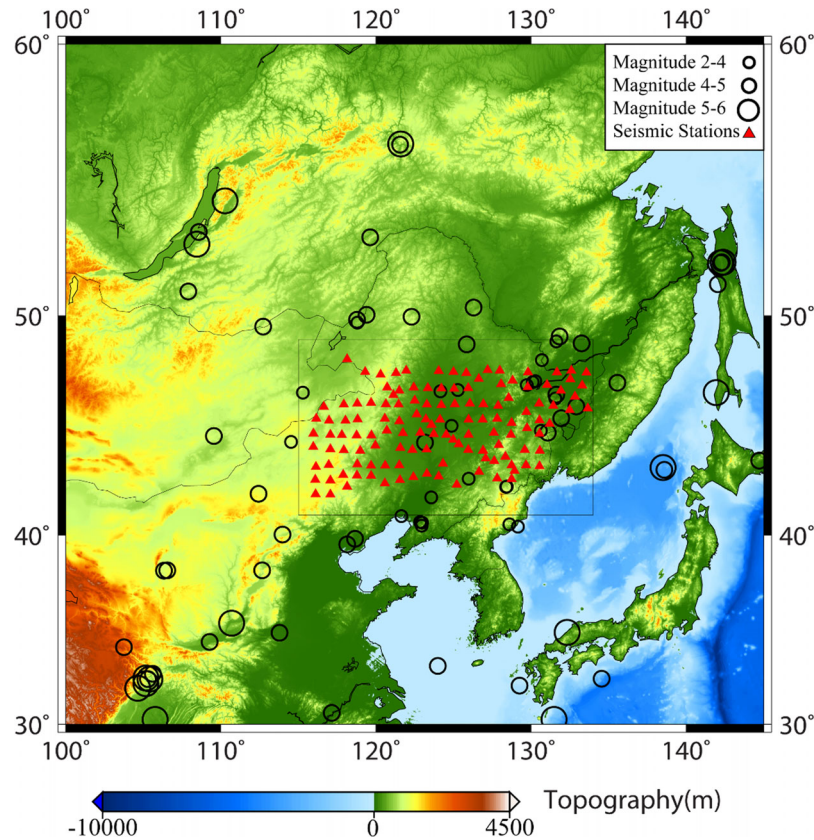


Figure 2. A map of the study region showing topography and the locations of 78 crustal events. Red triangles represent the locations of 127 NECESSArray stations.

Basin and to the southwest of the Great Xing'an Range (Liu *et al.* 2001). The present tectonics of NE China are characterized by E–W compression, right lateral strike-slip faulting on major NNE-striking faults and abundant intraplate volcanoes distributed around the Songliao Basin.

3 DATA AND METHOD

The data used in this study are collected by the 127 station NECESSArray (Fig. 2) from 2009 September 12 to 2011 August 19. This study uses 78 events (see Appendix) ranging from 2.5 to 6.0 in magnitude (Fig. 2). All events are located at 40 km or less in depth. Epicentral distances are limited to a minimum of 2.5° and a maximum of 20° . These limits were used because Lg does not form at distances less than about 2.5° and Lg becomes quite weak at distances greater than 20° .

The Lg waves show an increase in their maximum amplitude when the ray paths cross the Songliao Basin (Figs 3–5). Fig. 3 illustrates the spatial distribution of the theoretical ray paths along the radial directions, the location of the seismic stations and the location of two earthquakes that demonstrate wave amplification behaviour. An example of this amplification is shown in Fig. 4, which illustrates seismograms generated by an event that took place on 2011 July 16 near Lake Baikal. Station NE78, located in the Songliao Basin, recorded a half-maximum amplitude of 17 451 nm while station NE77, located outside of the basin, recorded a half-maximum amplitude of 8882 nm despite the fact that it is closer to the earthquake than station NE78. Station NE78 shows twice the amplitude of station NE77, even though it is further away from

the source. The same near station site effects are generated by an earthquake that occurred on 2010 July 30 in Eastern Mongolia (Fig. 5). The amplitudes recorded by stations NE45, NE55 and NE56 within the basin are larger than the amplitude recorded by station NE75, which is located closer to the source and outside the basin.

The amplification of seismic waves can be caused by several factors. These factors are discussed in a study by Pratt *et al.* (2003). Low impedance in the top sedimentary layer of the basin relative to lower layers results in an increase in amplitude and resonances, which further contribute to the increase in Lg amplitude. Focusing caused by the basin or deeper structures can also contribute to the increase in Lg amplitude within the basin. Moreover, reflections from the side of the basin may constructively interfere with direct arrivals within the basin. According to Pratt *et al.* (2003) these last two effects are not as strong as the resonance effect caused by impedance contrast. In order to remove the site effect we use the RTM method.

The RTM method has the advantage that the site responses are completely removed since the site response for all the events recorded by a particular station is assumed to be identical and thus cancels out when the amplitude ratios are divided. The main disadvantage of this method is that the geometry is quite restrictive, reducing the number of ray paths that can be used. However, for NECESSArray, most of the events used are located outside the network, leaving a significant number of reverse two-station ray paths to work with.

In total, 11 642 reverse two-station (RTS) and reverse two-event (RTE) paths (Fig. 6) are used in this study. Of these, 11 442 paths have reverse two-station geometry, which requires a station pair

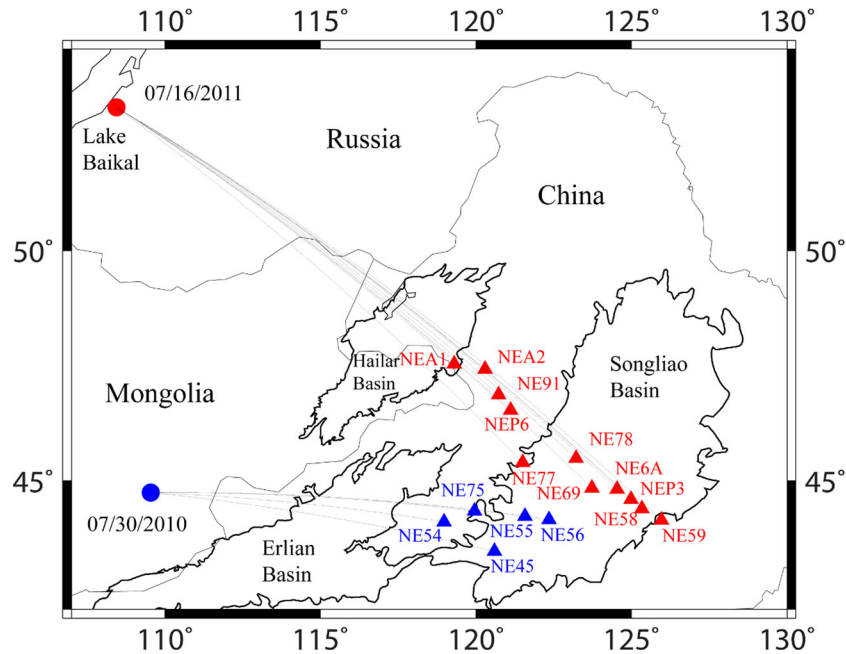


Figure 3. A map showing paths from the 2011 July 16 Lake Baikal event to stations ranging from the Great Xing'an Range to Songliao Basin (event and stations are coloured in red) and paths from the 2010 July 30 event from eastern Mongolia to stations ranging from the Great Xing'an Range to Songliao Basin (event and stations are coloured in blue).

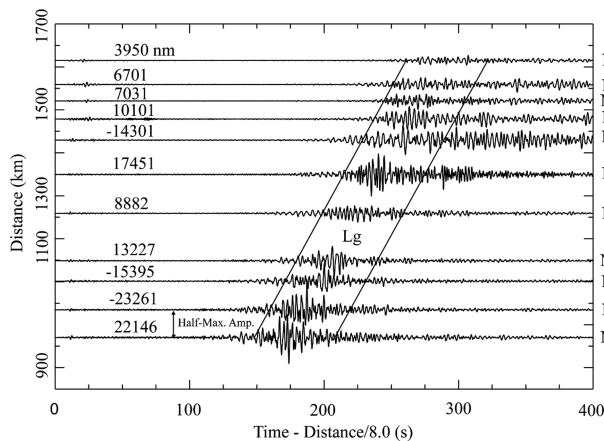


Figure 4. Seismograms from the 2011 July 16 earthquake from Lake Baikal. The vertical component ground displacements are displayed according to their epicentral distances in kilometres. The maximum half-amplitude is indicated in nanometres and the station names are listed on the right. The stations NE78, NE69 and NE6A in the Songliao Basin show amplification of amplitude relative to station NE77, which is located in the Great Xing'an Range and closer to the event.

between two events. The remaining 200 paths have reverse two-event geometry, which requires an event pair between two stations. Ideally, the events and stations in both the RTE and RTS cases are arranged along a great circle path (Figs 7a and c); however, a more realistic arrangement allows the event locations, or in the case of the RTE method the station locations, to deviate from the great circle path (Figs 7b and d). To minimize errors a maximum deviation of 15° is allowed. This maximum was chosen based on a study by Der *et al.* (1984), where they determined that the forward scattered waves contained in Lg arrive at a station over a range of directions and that these waves are deflected from the great circle by a maximum angle of 15° . As suggested by Xie *et al.* (2004) and Bao *et al.* (2011), we assume that the error caused by these deviations

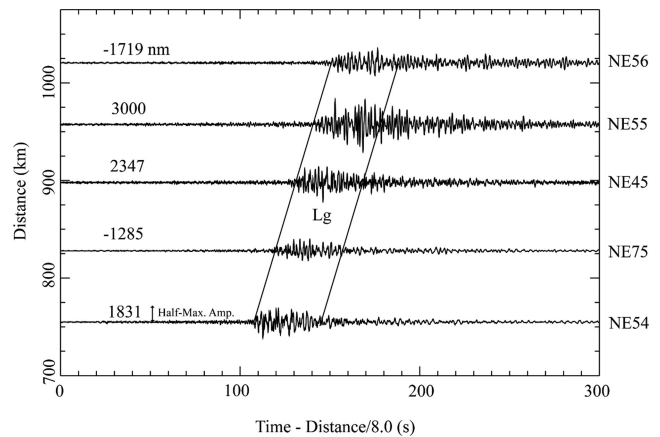


Figure 5. Seismograms from the 2010 July 30 earthquake from Mongolia. The vertical component ground displacements, the maximum half-amplitude and the station names are labelled in the same manner as in Fig. 4. The stations NE45, NE55 and NE56 in the Songliao Basin show amplification of amplitude relative to the closer stations NE75 and NE54.

in the forward scattered wave paths is similar to the error caused by the deviation of events or stations from the great circle path. Thus, a maximum deviation angle of 15° should be appropriate.

The spectral amplitude measured at each station can be given as,

$$A(f) = S(f) I(f) E(f) G(\Delta) \exp \left[\frac{-\pi f \Delta}{v Q(f)} \right], \quad (1)$$

where, $A(f)$ is the amplitude at a given frequency, $S(f)$ is the source response, $I(f)$ is the instrument response, $E(f)$ is the station site effect, $G(\Delta)$ is the geometrical spreading term, v is the assumed average Lg group velocity of 3.5 km s^{-1} , f is the central frequency and Δ is the epicentral distance. In this study, we used a narrow band ranging from 0.5 to 1.5 Hz with a central frequency of 1 Hz.

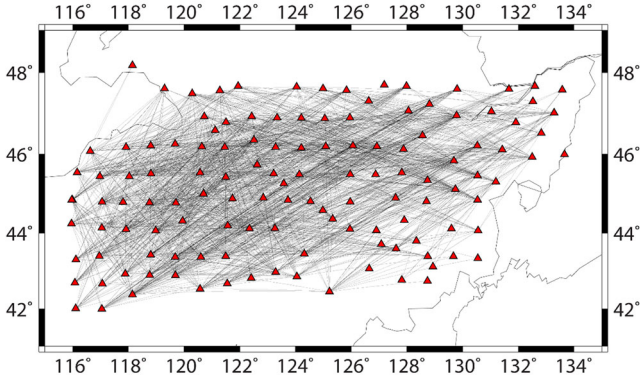


Figure 6. The ray path map showing 11 642 reverse two-station/event paths used for this study. In total, 11 442 paths have reverse two-station geometry and the other 200 paths have reverse two-event geometry. The red triangles show the locations of 127 NECESSArray stations.

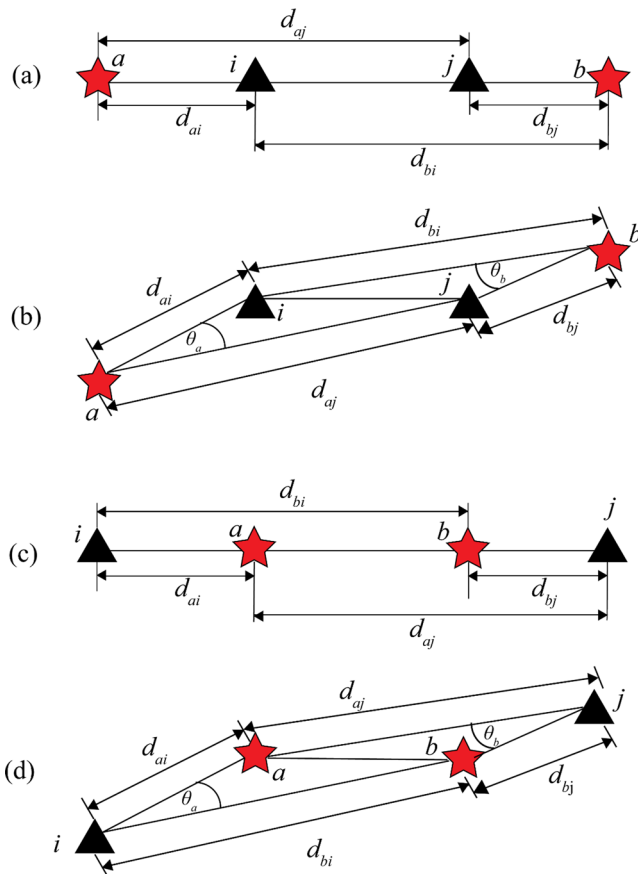


Figure 7. An illustration of reverse two-station and reverse two-event geometry. The black triangles i and j represent seismic stations and the red stars a and b represent earthquakes. The epicentral distances between the earthquakes a and b and the stations i and j are represented as d_{ai} , d_{aj} , d_{bi} and d_{bj} , respectively. (a) The ideal geometry for the reverse two-station configuration. (b) The actual geometry for the reverse two-station configuration. (c) The ideal geometry for the reverse two-event configuration. (d) The actual geometry for the reverse two-event configuration. θ_a and θ_b are the subtended angles between earthquakes a and b for stations i and j , respectively.

The geometrical spreading term for the Lg waves is assumed to be in the form of,

$$G(\Delta) = G_0 \Delta^{-m}, \quad (2)$$

where G_0 is a constant (Chun *et al.* 1987; Yang 2002; Bao *et al.* 2011) and m is the geometrical spreading term. In both methods event a and event b are used to calculate an amplitude ratio which is shown in eq. (3).

$$\frac{A_{ai}(f) A_{bj}(f)}{A_{aj}(f) A_{bi}(f)} = \left(\frac{d_{ai} d_{bj}}{d_{aj} d_{bi}} \right)^{-m} \times \exp \left[\frac{\pi f}{v Q(f)} (d_{aj} - d_{ai} - d_{bj} + d_{bi}) \right]. \quad (3)$$

This equation assumes a constant crustal velocity structure and constant Q between stations i and j (RTS method) or between events a and b (RTE method). We can solve eq. (3) for the apparent attenuation factor Q in terms of amplitudes and epicentral distances,

$$Q(f)_{\text{path}}^{-1} = v [\pi f (d_{aj} + d_{bi} - d_{ai} - d_{bj})]^{-1} \ln \left[\frac{A_{ai}(f) A_{bj}(f)}{A_{aj}(f) A_{bi}(f)} \left(\frac{d_{ai} d_{bj}}{d_{aj} d_{bi}} \right)^m \right], \quad (4)$$

where A_{aj} , A_{aj} , A_{bi} and A_{bj} are the spectral amplitudes recorded by stations i and j for events a and b and d_{ai} , d_{bj} , d_{aj} and d_{bi} are corresponding epicentral distances.

Geometrical spreading of the Lg wave is generally assumed to be 0.5 based on a theoretical study by Yang (2002). This corresponds to the spreading of a cylindrical wave front. We tested this by using our raw amplitude ratios from the station pairs to fit an equation in the form of

$$\log_{10} \left(\frac{A_{ai}}{A_{aj}} \right) = \beta - m \log_{10} \left(\frac{d_{ai}}{d_{aj}} \right) - \alpha (d_{ai} - d_{aj}) \quad (5)$$

for the constants β , m and α with base 10 logarithms. The constant β should be near zero but is included to account for a possible asymmetric distribution in station gains (i.e. station site effect). The constant m represents the geometric spreading coefficient and α is the attenuation coefficient [$\alpha = \pi f \log e / v Q(f)$]. We found a geometric spreading coefficient of 0.36 with 95 per cent confidence bounds of 0.28–0.43 and a gain (β) of 0.026 magnitude units with 95 per cent confidence bounds of 0.0123–0.0398. Average Q_0 is calculated from the attenuation coefficient and is found to be 397 with 95 per cent confidence bounds of 378–409. For comparison, we constrain the spreading coefficient m equal to 0.5, a value that is often assumed for Lg, and find a gain value of 0.050 with bounds of 0.036–0.064 magnitude units and a Q_0 value of 306 with bounds of 297–310. This is an increase in average Q_0 of 91 compared to the unconstrained result. This is a minor bias and does not affect the tomography patterns.

In order to see if our new results are significant, an F -test is performed. With a 95 per cent confidence level it is found that changing the spreading coefficient to 0.36 is significant, as is the change in the gain from the assumed 0–0.028 magnitude units. It likely represents a ray path bias due to unequal azimuth distribution of ray paths that causes some stations to be used more than others and their gains are overemphasized. While non-zero, this is a relatively small number and can be ignored.

The data are processed by first filtering the vertical seismograms using seismic analysis code (SAC) with a two-pass, three-pole recursive Butterworth filter with corners at 0.2 and 5 Hz. The Lg wave train group velocity window is set at 0.6 km s⁻¹, where the beginning of the window is visually picked. This window should include as little of the beginning of the Rayleigh wave or Sn coda as possible. In cases where the Lg phase is blocked by oceanic crust the seismograms are not used. Pn arrival times are also picked in order to define the 20 s pre-Pn ambient noise window. The Lg and pre-Pn spectra are calculated based on these windows and then

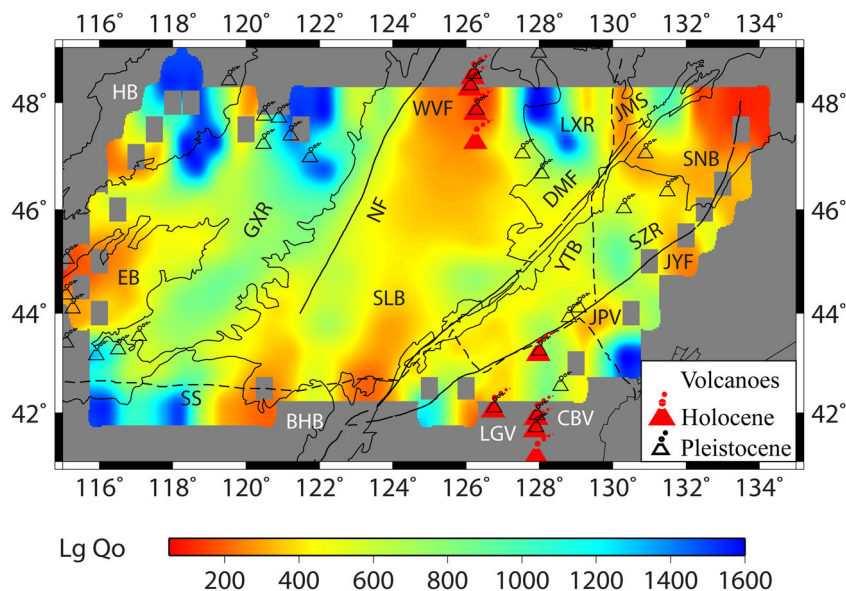


Figure 8. Map of $Lg Q_0$ in NE China. The abbreviations of the names of mountains, basins, sutures and faults are the same as in Fig. 1. Black lines indicate major active faults. Blue represents high Q_0 (low attenuation) regions and red represents low Q_0 (high attenuation) regions. High Q_0 regions are mainly found in the mountains. Low Q_0 regions are associated with Quaternary volcanic fields and sedimentary basins.

the instrument responses are removed. The signal-to-noise ratio (SNR) is calculated by dividing the Lg spectra by the pre-Pn spectra. Records with an average SNR below 2.0 are removed since these data are overwhelmed by noise. In this study we used the geometric spreading value of 0.36 that we calculated instead of the commonly assumed value of 0.5. Once the spectra are obtained, the interstation Q_0 values are found using the method outlined above. Q_0 values above 5000, below 10 or with an error ratio greater than 0.6 are rejected. The error ratio is defined as the error in Q_0 divided by Q_0 , where the error is one standard deviation.

4 RESULTS

Extensive ray path coverage was obtained throughout NE China as shown in Fig. 6. Regions of high Q_0 in the 1 Hz Lg attenuation model (Fig. 8) appear to correspond with the Great Xing'an Range, Lesser Xing'an Range and the Songen-Zhanguangcai Range. On average, $Lg Q_0$ is found to be ~ 900 – 1000 in these mountain ranges. Southcentral and easternmost sections of the Songliao Basin show intermediate Q_0 values (~ 700 ; Fig. 8). Regions of low Q_0 correspond with basins such as the Erlian Basin, Sanjiang Basin and the northern and southern sections of the Songliao Basin. $Lg Q_0$ ranges from ~ 200 to 400 in these high attenuation areas (Fig. 8). The Holocene age Wudalianchi volcanic field, which partially lies within the northern Songliao Basin, and the Pleistocene age volcanoes within the Sanjiang Basin also show low Q_0 regions (Fig. 8). Finally, Jingpuhi, a Quaternary volcanic field located along the southeastern edge of our area of study, shows a low Q_0 value of about 400 (Fig. 8).

In order to determine the resolution achieved by this ray path coverage, checkerboard models with ± 15 per cent random noise were generated with $2^\circ \times 2^\circ$, $1.5^\circ \times 1.5^\circ$ and $1^\circ \times 1^\circ$ cell sizes (Fig. 9). Only $2^\circ \times 2^\circ$ resolution is successfully recovered. There is a small amount of smearing even in the $2^\circ \times 2^\circ$ case, particularly along the edges of our area of study and in the southeastern area near the Changbaishan volcanic field where there was little instru-

mentation. Ray paths crossing the Sea of Japan show a complete blockage of Lg (Rapine *et al.* 1997; Furumura & Kennett 2001). Weak S_n with low amplitude and little coda are seen in the vertical component seismograms, therefore contamination of the Lg phase by S_n is considered minor.

5 DISCUSSION

Several correlations can be made when we compare our results to previous studies and known geological structures. First we compare our map with heat flow data collected from a limited number of wells in a study by Wang (2001). In a recent study Wang & Cheng (2012) found high heat flow values of $\sim 70 \text{ mWm}^{-2}$ within the Songliao Basin, which corresponds to an estimated high temperature of about 600°C at the Moho. Although regions of high heat flow ($> 70 \text{ mW m}^{-2}$) show low Q_0 values (> 800 ; Fig. 10) there is insufficient heat flow data to state that heat flow is the sole cause of these values.

We also compared our results to a sediment thickness map (Fig. 11) based on a global model made by Laske and Masters (1997). The map shows that the deepest sediments, about 7 km deep, are found in the centre of the Songliao Basin near Daqing (Fig. 11). Regions with very thin (< 1 km) or no sediments tend to show high Q_0 values (> 800 ; Fig. 12) while areas with thicker sediments tend to show low Q_0 values, but as is the case with heat flow, we cannot claim that thick sediments are the only cause for these low Q_0 values. Although attenuation is related to the presence of thick sediments, it is not directly tied to the basin depths. The high attenuation in the southern part of the Songliao Basin (Fig. 8) could be partially due in part to the Late Cenozoic rifts associated with extension of the North China Craton and the Bohai Basin. Low Q_0 seen in the northern part of the basin may be due to the presence of the recently active Wudalianchi volcanic field.

The Erlian, Hailar and Sanjiang Basins contain only shallow sedimentary layers, about ~ 1 km in the Erlian Basin and ~ 1 – 2 km in the Hailar Basin (Fig. 11). Again, a more likely explanation for the high attenuation seen in the Erlian and Sanjiang Basins

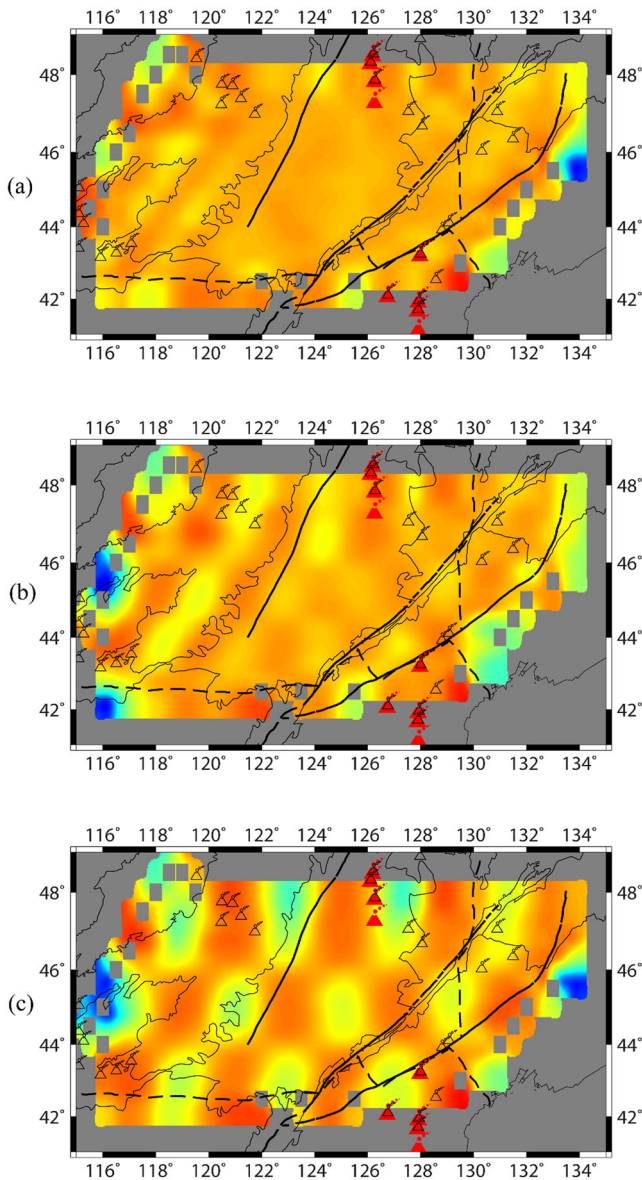


Figure 9. Resolution tests for Lg Q_0 . The same ray paths and damping factor that were used to produce the Lg Q_0 image are used in the resolution tests. (a) $1^\circ \times 1^\circ$ resolution test image. Note that details in the Songliao Basin and the Great Xing'an Range cannot be resolved. (b) $1.5^\circ \times 1.5^\circ$ resolution test image. Some of the features in the Songliao Basin and the Great Xing'an Range can be resolved. (c) $2^\circ \times 2^\circ$ resolution test image. With the exception of the edges, most of the attenuation anomalies are resolved.

is the collective effect of the presence of Pleistocene volcanism, unconsolidated sediments and high heat flow.

We compare low Q_0 areas to the presence of volcanism. Pleistocene volcanoes along the edge of the Sanjiang Basin appear to correspond to the low Q_0 values seen in that region. The Jingpuhi volcanoes (Fig. 8) in the southeast are also located in a region of low Q_0 . The Changbaishan volcanic field is also shown on our map (Fig. 8). However, a lack of data in this region does not allow us to draw any conclusions at this time. Overall, we observe that Holocene volcanoes have a greater effect on Lg attenuation than Pleistocene volcanoes as shown in Fig. 13. The Q_0 values for Pleistocene volcanoes vary from ~ 100 to 1300 (Fig. 13a) while the Q_0 values for the Holocene volcanoes vary from ~ 100 to 750

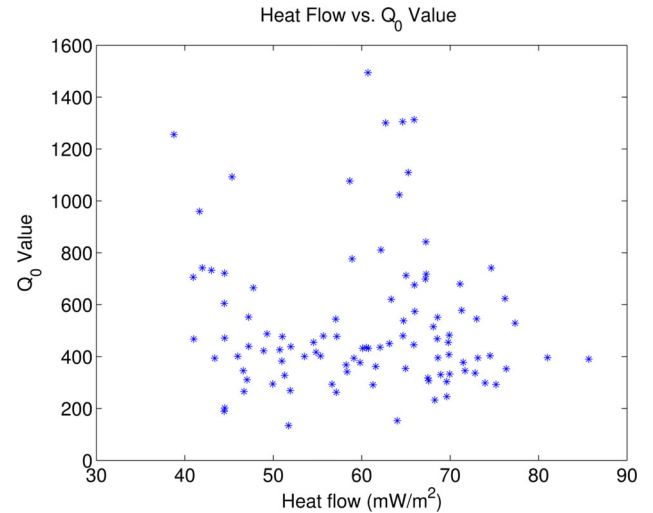


Figure 10. Scatter plot of Q_0 versus interpolated heat flow value. The Q_0 value at each integer degree latitude–longitude intersection point is plotted against the interpolated heat flow value at the respective point. The heat flow values are interpolated using a limited number of values assimilated from the Global Heat Flow Database for China. Regions with high heat flow ($<70 \text{ mW m}^{-2}$) tend to show low Q_0 (<800).

(Fig. 13b). Therefore we can conclude that younger volcanoes have a more dominant influence on Lg attenuation.

We compare our study to a recent study of anisotropic Rayleigh wave phase velocity beneath NE China, which shows significant lateral variation of crustal velocities (Tian *et al.* 2013). We specifically looked at the 20 and 25 s Rayleigh wave phase velocity images, which sample the middle crust. The 20 and 25 s Rayleigh waves have a higher phase velocity beneath the Great Xing'an Range, the Lesser Xing'an Range and the northern part of the Songen-Zhangguangcai Range. Lower phase velocities were found beneath the rifted Songliao Basin. Thus, regions of high Q_0 appear to correspond with high velocities and regions of low Q_0 appear to correspond with low velocities. Regions of low phase velocities were also found beneath the Changbaishan volcanic field and Mongolia in Tian *et al.*'s (2013) study.

We also compare our study to the previous Lg attenuation study done by Zhao *et al.* (2010), where they used 1720 Lg wave spectra derived from 20 stations and 125 earthquakes from 1995 October to 2007 August. They found high attenuation areas with Q_0 values ranging from ~ 10 to 300 corresponding to the Erlian and Sanjiang Basins as well as the northern and southern Songliao Basin. In the mountainous areas Q_0 values of ~ 400 – 900 were found but there was significant variation in Q with frequency. Our regional patterns of attenuation in these regions are consistent with those found by Zhao *et al.* (2010). However, the Lg Q_0 values found by Zhao *et al.* (2010) are consistently lower by ~ 200 – 300 than those we found in our study. The difference between our values arises because our tomographic method inverted for $1/Q_0$, while Zhao *et al.* (2010) inverted for Q_0 . If the Q_0 value distribution does not contain high Q_0 values in a mapped region, the inversion will yield a smaller average Q_0 value. With the exception of these differences, the gross attenuation features of the two models are consistent.

Overall, the main characteristics of Lg attenuation in NE China are that low Q_0 regions occur within basins that contain unconsolidated sediments or have experienced Quaternary volcanic activity and beneath Quaternary volcanic fields located outside of basins. High Q_0 regions are associated with mountains and granitic regions that were not greatly affected by Cenozoic tectonics.

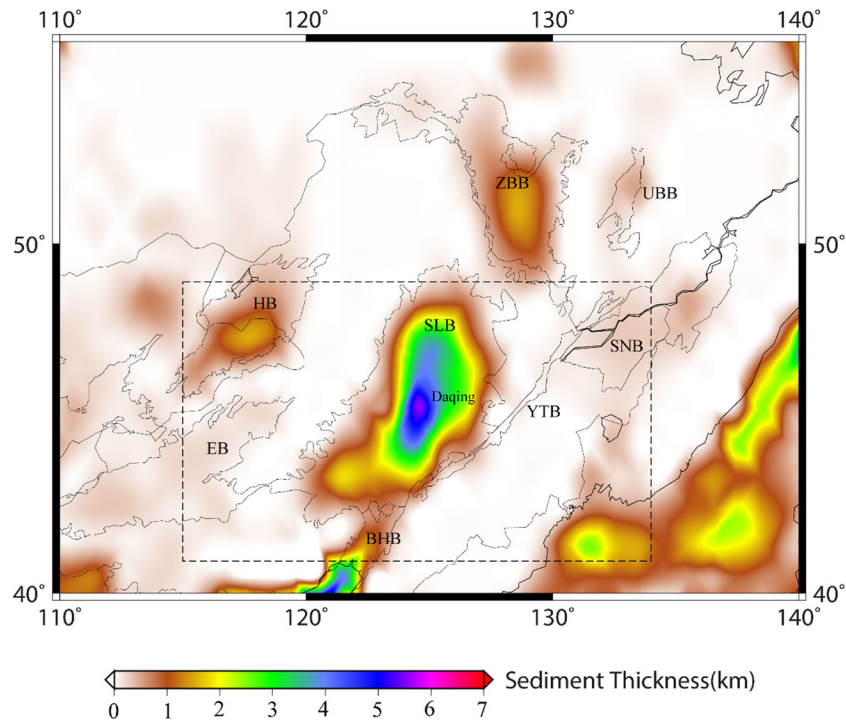


Figure 11. Sediment thickness map for NE China based on the global digital map of Laske & Masters (1997). The abbreviations of the names of the basins are: BHB (Bohai Basin), EB (Erlian Basin), HB (Hailar Basin), SLB (Songliao Basin), ZBB (Zeya-Bureya Basin), UBB (Upper Bureya Basin), SNB (Sanjiang Basin) and YTB (Yitong Basin). The thickest sediments (~6–7 km) are found close to Daqing in the Songliao Basin.

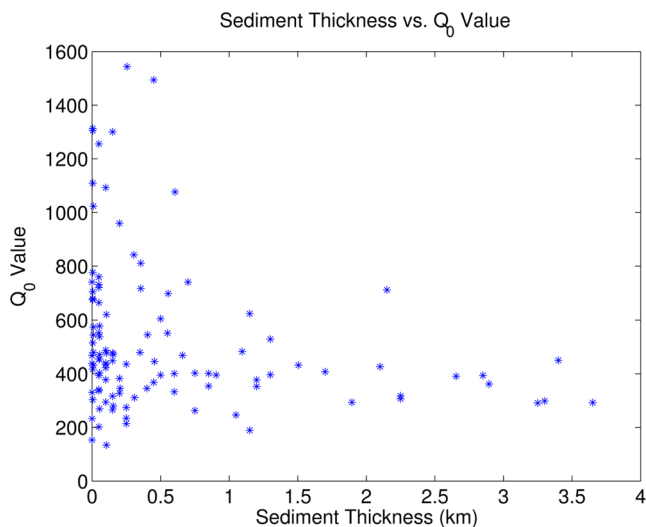


Figure 12. Scatter plot of interpolated sediment thickness versus Q_0 . The Q_0 value at each integer degree latitude–longitude intersection point is plotted against the sediment thickness at the respective point. Regions with high Q_0 (>800) have very thin (>1 km) or no sediments.

6 CONCLUSION

The RTM was used to measure Lg Q_0 in NE China using an extensive data set collected by the NECESSArray. The advantage of this method is that it eliminates the source and site terms completely. Our comprehensive Lg Q_0 image can resolve features of about $2^\circ \times 2^\circ$ overall, with the best resolution being found in the Songliao Basin and surrounding regions. To the first order, strong lateral variation of Lg attenuation throughout NE China is correlated with Late

Cenozoic tectonics. Areas of low attenuation were found to correspond to high Rayleigh wave phase velocities while areas of high attenuation correlated well with regions of low Rayleigh wave phase velocities. Highly attenuating regions are found to be mainly associated with areas affected by Holocene volcanism. Unconsolidated thick sediments also attenuate Lg waves in the southern Songliao and Erlian Basins, but this effect seems to be less drastic than the effects due to the Holocene volcanoes.

ACKNOWLEDGEMENTS

We would like to thank Xueyang Bao, William Scott Phillips and Jiakang Xie for their insights on modelling Lg attenuation and contributions in coding the programs used in this study. We thank editor Gabi Laske and the two anonymous reviewers for their constructive comments, which improved this manuscript immensely. We would also like to thank the dedicated international team from China, Japan and the USA who collected the NECESSArray waveforms used in this study. Instruments and critical field and data assistance were provided by the PASSCAL facility of the Incorporated Research Institutions for Seismology (IRIS) through the PASSCAL Instrument Center at New Mexico Tech and also instrument pools from the Peking University and University of Tokyo. Finally, we would like to thank Paul Wessel and Walter H.F. Smith for the use of the Generic Mapping Tools (GMT) software, Lawrence Livermore for the use of their Seismic Analysis Code (SAC), the National Geophysical Data Center of NOAA for making the Etopo1 global relief map freely available, Fugro Robertson, Ltd. for making the basin classification database freely available through AAPG, Global Heat Flow Database of the International Heat flow Commission for collecting the heat flow data in China, Oliver Woodford for his export_figmatlab[®] code used to plot Figs 10, 12 and 13 and David

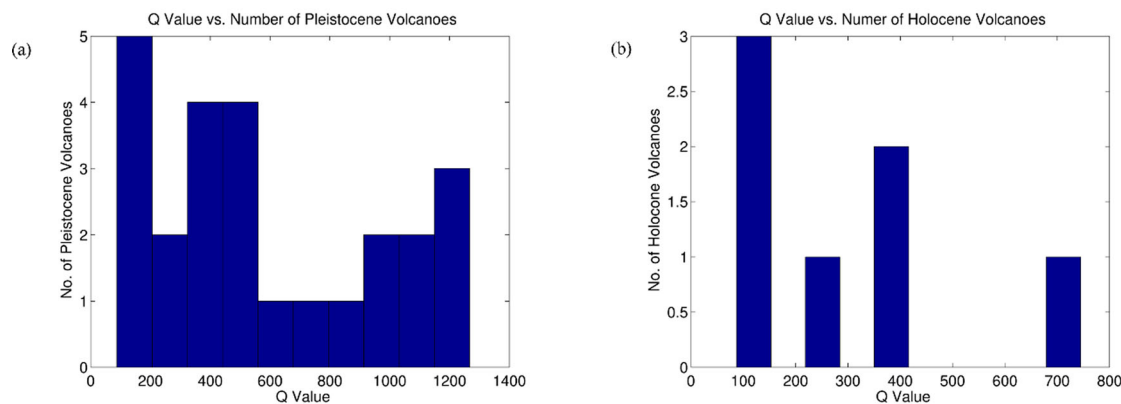


Figure 13. Histograms of Q_0 values at each Pleistocene and Holocene volcano in the Lg Q_0 map. (a) Q_0 value of each Pleistocene volcano. (b) Q_0 value of each Holocene volcano. The Q_0 values of Holocene volcanoes vary from ~ 100 to 750 while the Q_0 values of Pleistocene volcanoes vary from ~ 100 to 1200. The younger volcanoes tend to have a greater effect on the Lg attenuation than the older volcanoes.

Ljung Madison for the colour schemes used for Figs 2 and 11. NECESSArray data are openly available from the IRIS Data Management System under experiment code YP 2009–2011. New Mexico State University is supported under NSF EAR-0608629, U.S. Air Force Research Laboratory contract No. FA9453-12-C-0235 and Los Alamos National Security Subcontract No. 218475.

REFERENCES

- Bao, X., Sandvol, E., Ni, J., Hearn, T., Chen, Y.J. & Shen, Y., 2011. High resolution regional seismic attenuation tomography in eastern Tibetan Plateau and adjacent regions, *Geophys. Res. Lett.*, **38**, L16304, doi:10.1029/2011GL048012.
- Bao, X., Sandvol, E., Chen, Y.J., Ni, J., Hearn, T. & Shen, Y., 2012. Azimuthal anisotropy of Lg attenuation in eastern Tibetan Plateau. *J. geophys. Res.*, **117**, B10309, doi:10.1029/2012JB009255.
- Bouchon, M., 1982. The complete synthesis of seismic crustal phases at regional distances, *J. geophys. Res.*, **87**, 1735–1741.
- Campillo, M., Gariel, J.C., Aki, K. & Sanchez-Seema, F.J., 1989. Destructive strong ground motion in Mexico City: source, path, and site effects during great 1985 Michocan earthquake, *Bull. seism. Soc. Am.*, **79**, 1718–1735.
- Chun, K.-Y., West, G.F., Kokoski, R.J. & Samson, C., 1987. A novel technique for measuring Lg attenuation results from eastern Canada between 1 to 10 Hz, *Bull. seism. Soc. Am.*, **77**, 398–419.
- Der, Z., Marshall, M.E., O'Donnell, A. & McElfresh, T.W., 1984. Spatial coherence structure and attenuation of the Lg phase, site effects, and interpretation of the Lg coda, *Bull. seism. Soc. Am.*, **74**, 1125–1148.
- Furumura, T. & Kennett, B.L.N., 2001. Variations in regional phase propagation in the area around Japan, *Bull. seism. Soc. Am.*, **91**, 667–682.
- Gallegos, A., Ranasinghe, N., Ni, J. & Sandvol, E., 2014. Lg attenuation in central and eastern United States as revealed by the EarthScope Transportable Array, *Earth planet. Sci. Lett.*, **402**, 187–196.
- Hasegawa, H.S., 1985. Attenuation of Lg waves in the Canadian Shield, *Bull. seism. Soc. Am.*, **75**, 1569–1582.
- Herrmann, R.B. & Kijko, A., 1983. Modeling some empirical vertical component Lg relations, *Bull. seism. Soc. Am.*, **73**, 157–171.
- Kiminami, K. & Imaoka, T., 2013. Spatiotemporal variations of Jurassic-Cretaceous magmatism in eastern Asia (Tan-Lu Fault to SW Japan): evidence for flat-slab subduction and slab rollback, *Terra Nova*, **25**, doi:10.1111/ter.12051.
- Knopoff, L., Schwab, F. & Kausel, E., 1973. Interpretation of Lg, *Geophys. J. R. astr. Soc.*, **33**, 389–404.
- Laske, G. & Masters, G., 1997. A global digital map of sediment thickness, *EOS, Trans. Am. geophys. Un.*, **78**, F483.
- Li, S.Q., Chen, F., Siebel, W., Wu, J.D., Zhu, X.Y., Shan, X.L. & Sun, X.M., 2012. Late Mesozoic tectonic evolution of the Songliao Basin, NE China: evidence from detrital zircon ages and Sr-Ndisotopes, *Gondwana Res.*, **22**, 943–955.
- Liu, J., Han, J. & Fyfe, W.S., 2001. Cenozoic episodic volcanism and continental rifting in northeast China and possible link to Japan Sea development as revealed from K-Ar geochronology, *Tectonophysics*, **339**, 385–401.
- McNamara, D.E., Owens, T.J. & Walter, W.R., 1996. Propagation characteristics of Lg across the Tibetan Plateau, *Bull. seism. Soc. Am.*, **86**, 457–469.
- Ni, J. & Barazangi, M., 1983. High-frequency seismic wave propagation beneath the Indian Shield, Himalayan Arc, Tibetan Plateau and surrounding regions: high uppermost mantle velocities and efficient S_n propagation beneath Tibet, *Geophys. J. Int.*, **72**, 665–689.
- Oliver, J., Ewing, M. & Press, F., 1955. Crustal structure of the Arctic regions from the Lg Phase, *Geol. Soc. Am. Bull.*, **66**, 1063–1074.
- Pratt, T.L., Brocher, T.M., Weaver, C.S., Creager, K.C., Snelson, C.M., Crosson, R.C., Miller, K.C. & Trehu, A.M., 2003. Amplification of seismic waves by the Seattle Basin, Washington State, *Bull. seism. Soc. Am.*, **93**, 533–545.
- Phillips, W.S. & Stead, R.J., 2008. Attenuation of Lg in the western US using the USArray, *Geophys. Res. Lett.*, **35**, L07307, doi:10.1029/2007GL032926.
- Rapine, R.R., Ni, J.F. & Hearn, T.M., 1997. Regional Wave Propagation in China and Its Surrounding regions, *Bull. seism. Soc. Am.*, **87**, 1622–1636.
- Ruzaiкин, A.I., Nersesov, I.L., Khalturin, V.I. & Molnar, P., 1977. Propagation of Lg and Lateral variations in crustal structure in Asia, *J. geophys. Res.*, **82**, 307–316.
- Singh, S. & Herrmann, R.B., 1983. Regionalization of crustal coda Q in the continental United States, *J. geophys. Res.*, **88**, 527–538.
- Sengör, A.M.C., Natal'in, B.A. & Burtman, V.S., 1993. Evolution of the Altai tectonic collage and Palaeozoic crustal growth in Eurasia, *Nature*, **364**, 299–307.
- Sun, M.D., Chen, H.L., Zhang, F.Q., Wilde, S.A., Dong, C.W. & Yang, S.F., 2012. A 100 Ma bimodal composite dyke complex in the Jiamusi Block, NE China: indication for lithospheric extension driven by Paleo-Pacific roll-back, *Lithos*, **162–163**, 317–330.
- Tian, Y., Legendre, C.P., Zhao, L., Wu, M., Lebedev, S., Chen, Q. & Ning, J., 2013. Anisotropic Rayleigh-wave phase-velocity maps beneath north-eastern China, *Presented at 2013 Fall Meeting, AGU*, San Francisco, December 15–19.
- Trujillo, A., 2013. Tectonics and Lg attenuation of Northeast China, *MS thesis*, Department of Physics, New Mexico State University, Las Cruces, New Mexico, USA, 92 pp.
- Wang, Y., 2001. Heat flow pattern and lateral variation of lithosphere strength in China mainland: constraints on active deformation, *Phys. Earth planet. Inter.*, **126**, 121–146.
- Wang, Y. & Cheng, S.-H., 2012. Lithospheric thermal structure and rheology of the eastern China, *J. Asian Earth Sci.*, **47**, 51–63.

- Windley, B.F., Alexeiev, D., Xiao, W., Kröner, A. & Badarch, G., 2007. Tectonic models for accretion of the Central Asian Orogenic Belt, *J. Geol. Soc., Lond.*, **164**, 31–47.
- Xie, J., 2002. Lg Q in the eastern Tibetan Plateau, *Bull. seism. Soc. Am.*, **92**, 871–876.
- Xie, J., Gok, R., Ni, J. & Aoki, Y., 2004. Lateral variations of crustal seismic attenuation along The INDEPTH profiles in Tibet from Lg Q inversion, *J. geophys. Res.*, **109**, B10308, doi:10.1029/2004JB002988.
- Xie, J.K. & Mitchell, B.J., 1990. A back-projection method for imaging large-scale lateral variations of Lg coda Q with application to continental Africa, *J. geophys. Res.*, **100**, 161–181.
- Yang, X., 2002. A numerical investigation of Lg geometrical spreading, *Bull. seism. Soc. Am.*, **92**, 3067–3079.
- Zhang, J.H., Gao, S., Ge, W.C., Wu, F.Y., Yang, J.H., Wilde, S.A. & Li, M., 2010. Geochronology of the Mesozoic volcanic rocks in the Great Xing'an Range, northeastern China: implications for subduction-induced delamination, *Chem. Geol.*, **276**, 144–165.
- Zhao, L.-F., Xie, X.-B., Wang, W.-M., Zhang, J.-H. & Yao, Z.-X., 2010. Seismic Lg-wave Q tomography in and around Northeast China, *J. geophys. Res.*, **115**, B08307, doi:10.1029/2009JB007157.
- Zhou, J.B. & Wilde, S., 2012. The crustal accretion history and tectonic evolution of the NE China segment of the Central Asian Orogenic Belt, *Gondw. Res.*, **23**, 1365–1377.
- Zhou, Z.H., Mao, W. & Lyckberg, P., 2012. Geochronology and isotopic geochemistry of the A-type granites from the Huanggang Sn-Fe deposit, southern Great Hinggan Range, NE China: implication for their origin and tectonic setting, *J. Asian Earth Sci.*, **49**, 272–286.
- Zor, E., Sandvol, E., Xie, J., Turkelli, N., Mitchell, B., Gasanov, A.H. & Yetirmishli, G., 2007. Crustal attenuation within the Turkish Plateau and surrounding regions, *Bull. seism. Soc. Am.*, **97**, 151–161.

SUPPORTING INFORMATION

Additional Supporting Information may be found in the online version of this article:

Appendix A Earthquake hypocentre parameters (<http://gji.oxfordjournals.org/lookup/suppl/doi:10.1093/gji/ggu375/-/DC1>).

Please note: Oxford University Press is not responsible for the content or functionality of any supporting materials supplied by the authors. Any queries (other than missing material) should be directed to the corresponding author for the article.